



7 SERIES GAS RANGETOPS

Redefining Professional Performance for Your Home.



The Viking Professional 7 Series Rangetops boast unrivaled heat distribution with Viking Elevation Burners™ that reach up to 23,000 BTUs while still achieving a low, even simmer thanks to the VariSimmer™ Setting. Adapted from the Viking Commercial product line, these rangetops allow for kitchen design flexibility without sacrificing power and performance.



36" W. Gas Rangetop



36" W. Gas Rangetop
with griddle



48" W. Gas Rangetop



48" W. Gas Rangetop
with griddle

Available in Stainless Steel (SS)

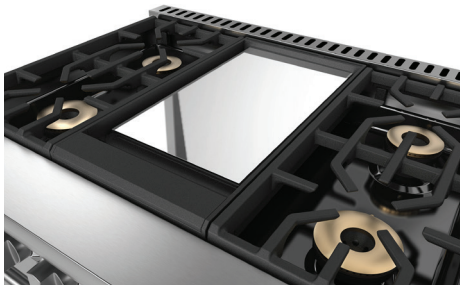


7 SERIES GAS RANGETOPS FEATURES



Commercial-Type Surface Power

- **EXCLUSIVE** Viking Elevation™ Burners with brass flame ports boast 23,000 BTUs across the front of all width configurations, with multiple 15,000 BTUs and one 8,000 BTU burner across the rear
- Three burner sizes efficiently deliver heat to any size cookware
- **EXCLUSIVE** VariSimmer™ Setting on ALL burners provides gentle, even simmering at precisely low cooking temperatures
- **EXCLUSIVE** SureSpark™ Ignition System, ensures automatic ignition/re-ignition, should the burners extinguish at any time while cooking



ViChrome™ Griddle

- Thermostatically controlled chrome griddle heats evenly to provide consistent cooking across the entire surface and can be easily removed for cleaning
- Inspired by the Viking Commercial plancha, the ViChrome™ Griddle features the **PATENT PENDING** grease containment system that strategically directs excess grease into a removable capture trough for quick and easy cleanup
- **PATENT PENDING** StayCool™ Trough Handle is designed to resist heat from the griddle so that the trough can be easily removed and hot grease discarded



Easy Operation and Cleanup

- SoftLit™ LED Lights accent the control panel and illuminate knobs
- **EXCLUSIVE** seamless, heavy gauge porcelain burner pan with elevated flame ports prevent spillovers from baking on, making cleanup easy
- Continuous grate design allows easy movement of pots and pans from burner to burner
- Grates, burner caps, knobs, griddle and grill accessories can be easily removed and taken to the sink for cleaning



Reversible Grill/Griddle – Optional Accessory

- Reversible non-stick aluminum grill/griddle accessory is perfect for healthy cooking without oil
- Interchanges with ViChrome™ griddle providing versatility for grilling, griddling, and defrosting



The Industry's Best and Most Comprehensive Warranty

- **3-year** full – complete product
- **90-day** full – cosmetic parts such as glass, painted items and decorative items
- **5-year** limited – gas burners

SPECIFICATIONS*

Gas 36" and 48"W. Rangetops		
Description	VGRT7366B VGRT7364G	VGRT7488B VGRT7486G
Overall width	35-7/8" (91.1 cm)	47-7/8" (121.6 cm)
Overall height (from bottom)	To top of grate – 8-3/4" (22.2 cm) To top of island trim – 9" (22.9 cm)	
Additions to overall height	To top of backguard—add 10" (25.4 cm) To top of high shelf—add 24-1/8" (61.3 cm)	
Overall depth (from rear)	To end of side panel—25-1/4" (64.1 cm) To end of landing edge—29-3/4" (75.6 cm) To end of knobs—30" (76.2 cm)	
Cutout dimensions	Cutout width—36" (91.4 cm) Cutout height—7-5/8" (19.4 cm) Cutout depth—min. 24" (61.0 cm), max. 25-1/4" (64.1 cm)	Cutout width—48" (121.9 cm) Cutout height—7-5/8" (19.4 cm) Cutout depth—min. 24" (61.0 cm), max. 25-1/4" (64.1 cm)
Gas requirements	Shipped natural or LP/Propane gas; field convertible with conversion kit (purchased separately); minimum required service line 1/2" (1.3 cm) ID NPT.	
Gas manifold pressure	Natural 5.0" W.C.P. / Liquid propane L/P 10.0" W.C.P.	
Electrical requirements	120 VAC/60 Hz 4ft. (121.9 cm), 3-wire cord with grounded 3-prong plug	
Max. amp usage	0.5 amps	
Surface burner rating Natural gas/LP	(3) Front 23,000 BTU (6.7 kW)/20,000 BTU (5.8kW) (2) Rear 15,000 BTU (4.4 kW)/13,500 BTU (4.0 kW) (1) Rear 8,000 BTU (2.3 kW)/8,000 BTU (2.3 kW)	(4) Front 23,000 BTU (6.7 kW)/20,000 BTU (5.8kW) (3) Rear 15,000 BTU (4.4 kW)/13,500 BTU (4.0 kW) (1) Rear 8,000 BTU (2.3 kW)/8,000 BTU (2.3 kW)
Griddle burner rating Natural/LP (if applicable)	15,000 BTU (4.4 kW)/13,500 BTU (4.0 kW)	
Approximate shipping weight	192 lbs. (87.1 kg)	242 lbs. (109.8 kg)

*Always refer to installation instructions included with product or visit vikingrange.com/specs for the most accurate cutouts and installation requirements.



For detailed product information, model numbers, or to request a quote call 1-888-845-4641 or visit vikingrange.com

Viking Range, LLC products are sold under the Brigade brand exclusively in Canada.

